

## How to setup the M5350 in Japan.

1). Purchase of the B-Mobile data card.

Two weeks before you leave for Japan trip, purchase the B-Mobile card online and state your arrival date and delivery address in Japan. This is the link for the purchase:

<http://www.bmobile.ne.jp/english/>

(You cannot purchase this card in any of their telecoms shops in Japan.)

2). When received the package in Japan, there is a setup instruction for Android / IOS devices. Basically they are:

APN: bmobile.ne.jp

User Name: bmobile@fr (for 1GB plan)

Or

bmobile@U300 (for 14days plan)

Password: bmobile

Authenticationtype: CHAP or PAP

PIN code: 0000

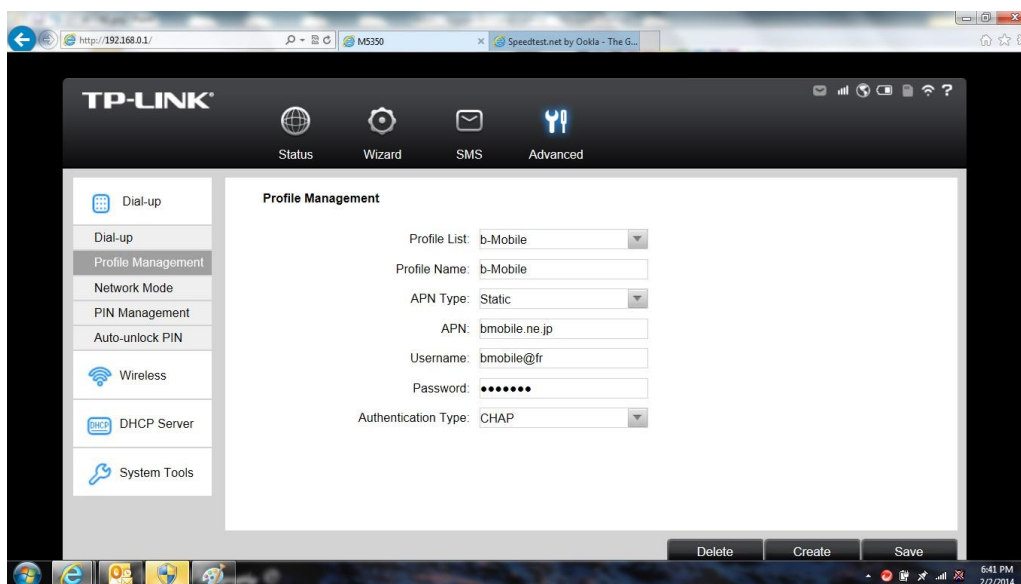
3). Insert the Data Sim Card (normal size) into the M5350.

4). Use your wireless device to pair with the M5350 (refer to M5350 user guide at

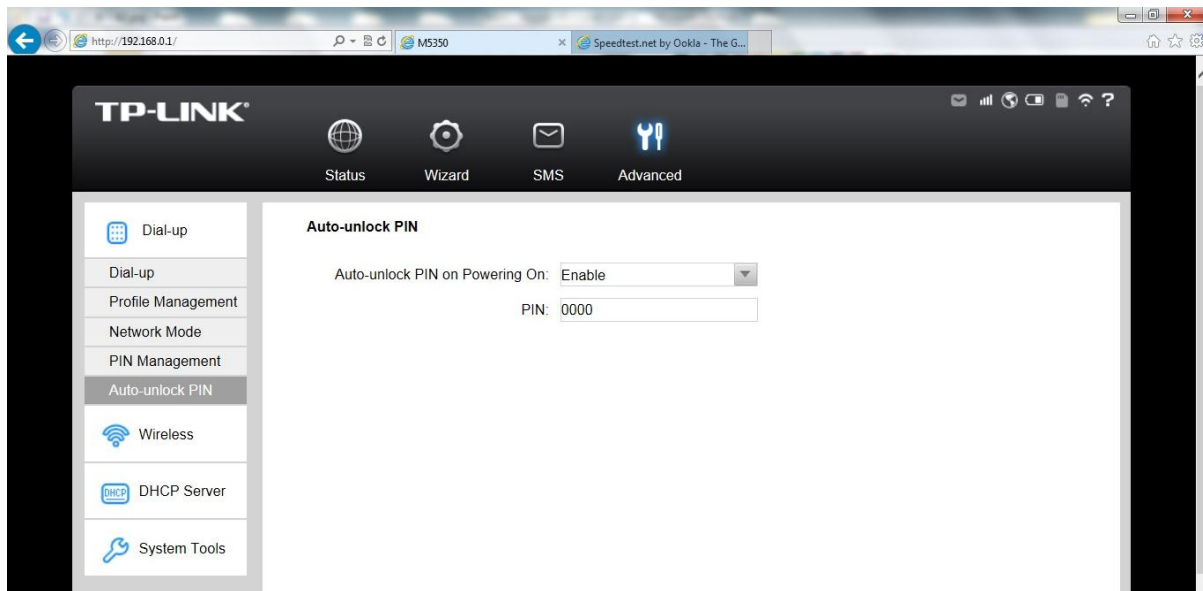
[http://www.tp-link.sg/resources/document/M5350\\_V1\\_User\\_Guide\\_1910100018.pdf](http://www.tp-link.sg/resources/document/M5350_V1_User_Guide_1910100018.pdf))

5). Enter the web management of M5350 (<http://192.168.0.1>)

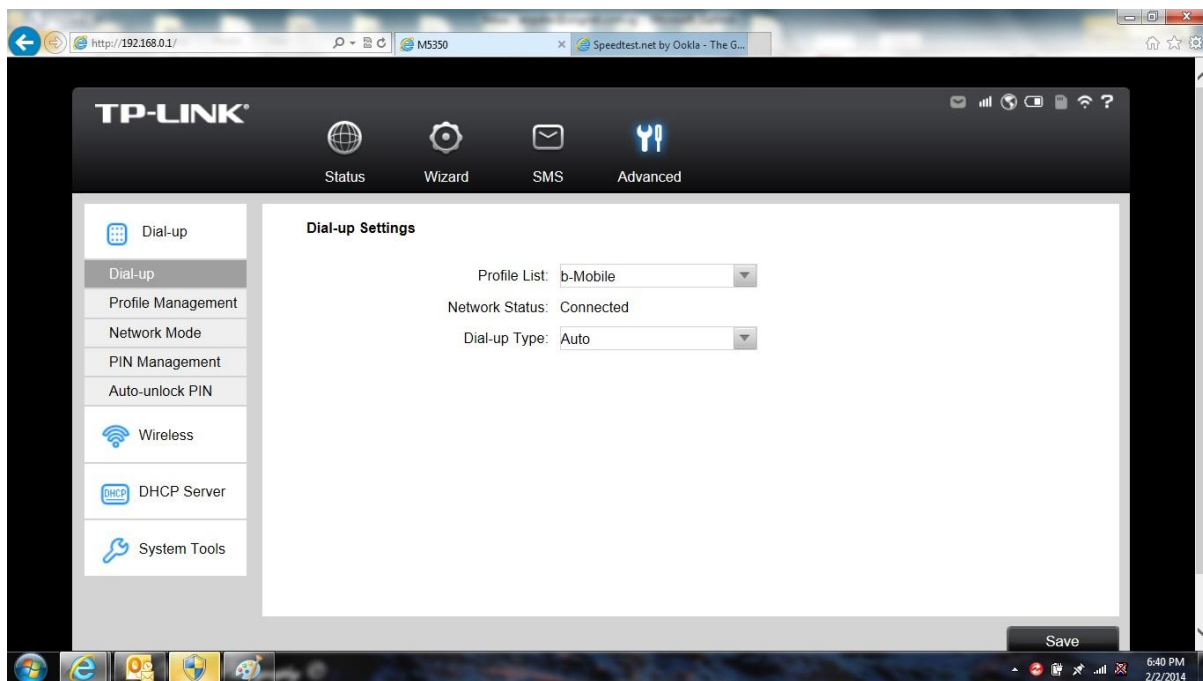
Select “Advanced” and “Create” the Profile for B-Mobile. Enter the settings from B-Mobile. Save the settings when done.



Next is to enter the PIN code '0000' upon power up of the M5350. Save this page setting.



At the "Dial-up" choose b-mobile in the profile list and set the Dial-up Type as "Auto"



6). Restart the M5350 by either use the "Restart" inside "System Tools" or power off and on the M5350.

7). After that, you will see the network name "Docomo" on the display screen. And the setup is completed.

8). As the data plan is only 1GB, when using, monitor the usage display at the bottom of the M5350.

9) Have a nice trip in Japan.